

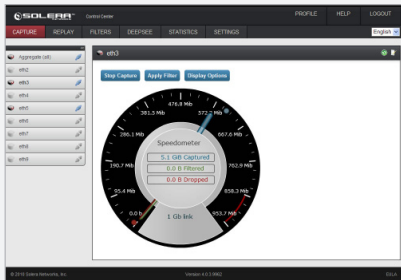
DS H160

COMPREHENSIVE NETWORK FORENSICS APPLIANCE



SOLERA DS H160

The DS H160 is capable of sustaining 5.0 Gbps capture rates and includes the DeepSee Forensics Suite™.



Easy-to-use browser-based management.



Visualize what data is crossing your network.



SOLERA DS H160

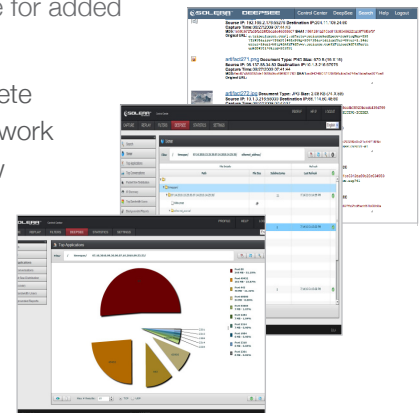
Active network forensics makes all network data flows instantly visible and replayable, enabling organizations to identify the full origin and extent of any network security event. The Solera DS H160 is the perfect network forensics appliance for organizations needing a solution that can support up to petabytes of captured network traffic. The Solera DS H160 offers organizations expandability and scalability in a network forensics appliance that integrates with an external storage system. Combining high-speed data capture, indexed storage, and comprehensive analysis tools, it is comparable to putting a security camera on your network – instantly exposing any specific network event, making even sophisticated and targeted network attacks plainly visible.

COMPREHENSIVE NETWORK RECORDING, INDEXING, SEARCH, AND ANALYSIS

The Solera DS H160 is a 3U rack-mountable appliance intended as a head-end device to write and read from large external storage arrays. It provides a combination of up to eight capture interfaces designed to “plug-and-play” into any Ethernet network, attaching via a mirror (SPAN port), network tap, or optical splitter. It has four downstream interfaces to external storage either SAS – to connect with Solera DS Storage appliances – or Fibre Channel to connect to a storage area network (SAN). System data is stored on enterprise-grade, field-replaceable system drives in RAID 5 configuration with hot spare for added resiliency.

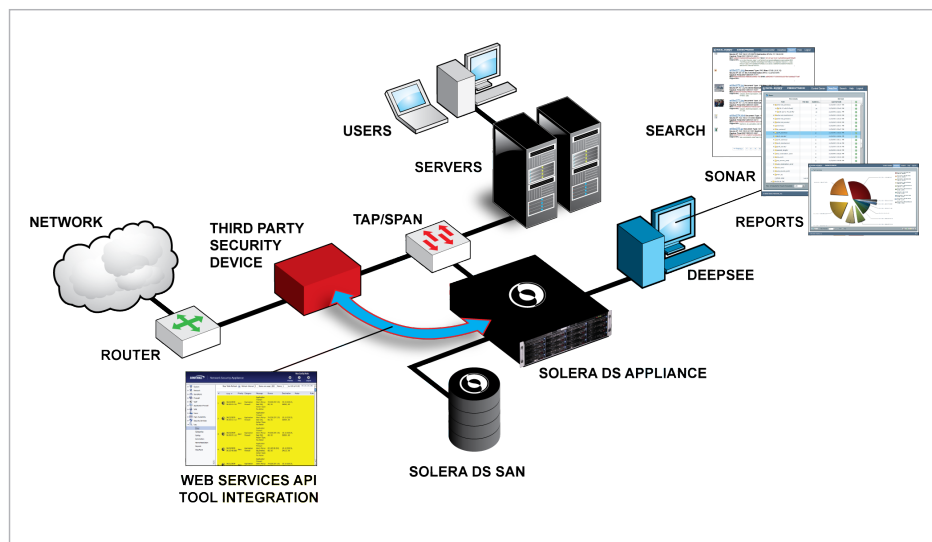
Solera DS Appliances create a complete indexed and searchable record of network traffic (header and payload), and allow analysis through reports, folder-based filtering, search, and web and IM reconstruction using the DeepSee Forensics Suite.

Solera DS Appliances include an open web services API with PCAP download and network playback. This facilitates integrations with leading network security providers.



View reports, search and discover the source of any network event.

EXAMPLE DS H160 NETWORK FORENSICS DEPLOYMENT



BENEFITS OF A SOLERA NETWORKS SOLUTION

IMPROVE NETWORK SECURITY

Network administrators now have comprehensive evidence to mitigate further risk and better protect against cyber attacks, data leakage, and internal misuse.

REDUCE INCIDENT RESPONSE TIME AND ELIMINATE FALSE POSITIVES

The most advanced network forensics technology along with flexible deployment options, allows organizations of all sizes to benefit from active network forensics and reduce the time-to-resolution for any network event, thus saving valuable IT budget.

INTEGRATION CAPABILITIES

Solera DS Appliances include an open web services API and work with hundreds of commercial and open-source management, analysis, and forensics tools to monitor and secure the network. Partners include ArcSight™, Palo Alto Networks™, Sourcefire™, SonicWALL™, and others.

COMPLIANCE WITH GOVERNMENT REGULATIONS

Network forensics provides an organization with the ability to protect confidential information while effectively demonstrating compliance with network security regulations such as HIPAA, SOX, PCI and more.

CONTACT US

Contact Solera Networks to give your network a memory. For more information, visit us online at www.soleranetworks.com or call us at 1-877-5SOLERA.

Solera Networks Headquarters
10713 South Jordan Gateway, Suite 100
South Jordan, Utah 84095
1 877-5SOLERA (877-576-5372)
1+ 801-545-4100 • 1+ 801-545-4040 fax
Email: info@soleranetworks.com

Solera Networks Japan, Inc.
Shinjuku Park Tower N30F
3-7-1, Nishi-Shinjuku
Shinjuku-ku, Tokyo 163-1030
1+ 81-3-5326-3367 • 1+ 81-3-5326-3001 fax
Email: info@soleranetworks.co.jp

TECH SPECS

Capture Rate
Up to 10 Gb/sec

System Drives
4 1TB; RAID System Array

Available Network Adapters
2 10 Gb Fiber ports and 4 copper GigE
10/100/1000 or 4 1000 Base SX

Power Supply
Redundant power supplies (2)

Appliance Size
3U

Dimensions
17.2" (W) x 25.5" (D) x 5.2" (H)

Weight
62.5 lbs

DeepSee Forensics Suite with HTTP Reconstruction
Included



© 2010 Solera Networks. All rights reserved. Solera Networks, Solera DS Series, DeepSee, Solera Virtual Appliance, DS 1160, DS 3160, DS 5160, DS H160 and See everything. Know everything. are trademarks of Solera Networks.